

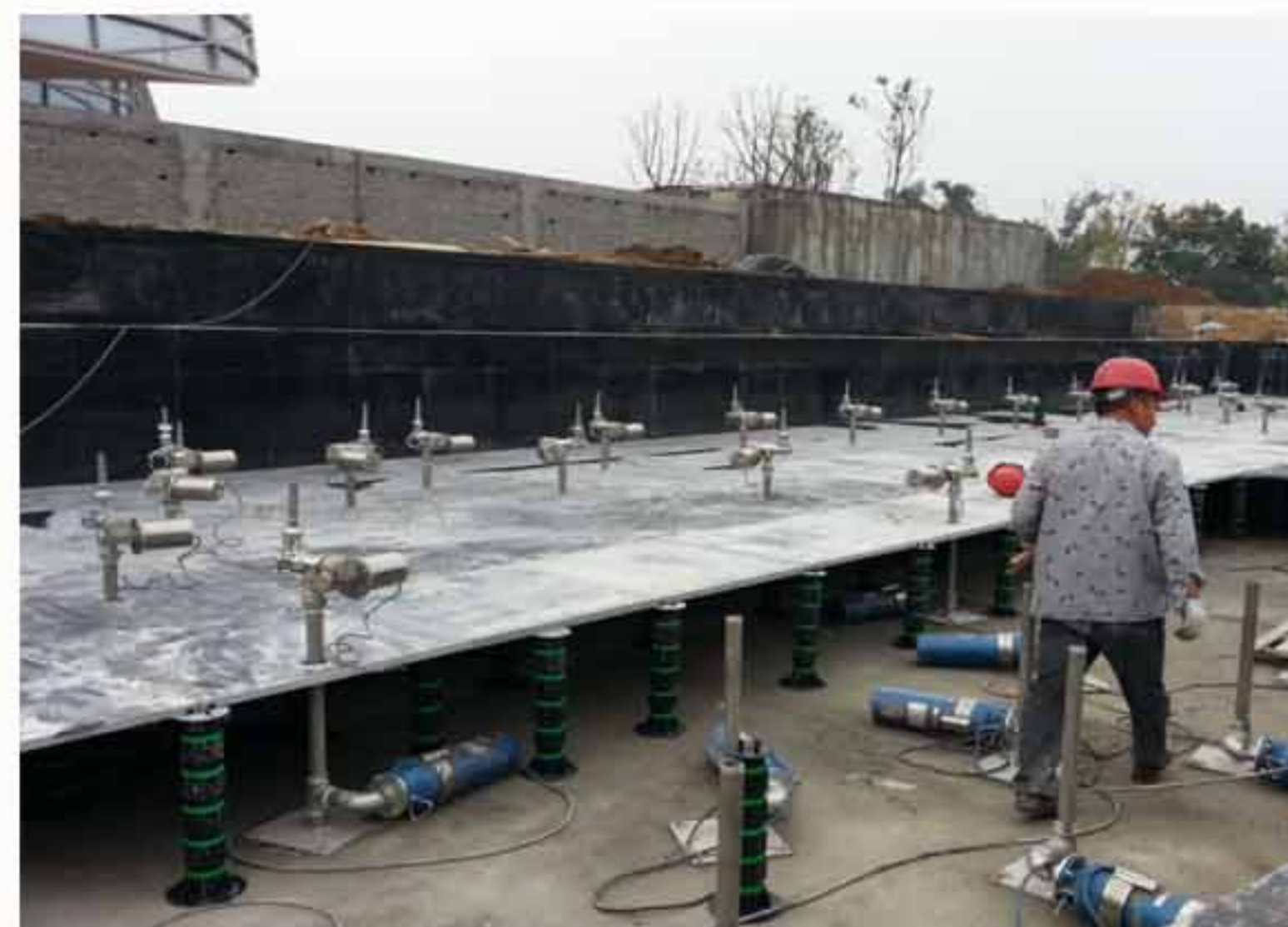
MOONBAY ADJUSTABLE PEDESTAL PAVER & DECKING SUPPORT

MOONBAY is a height-adjustable and slope-correctable pedestal manufacturer, Adjustable pedestals are mainly used for paver tiles and decking joist support. The pedestals are available in two separate series - MB-T series for paver tiles and MB-DP series for decking joist. And these have high strength loading ability, with comprehensive height range from 12.5mm to over 1200mm.



Feature

- Height range 12.5mm-1200mm
- 2/5/8/10mm paver spacer tabs
- Decking cradle fit any joist size 20-80mm
- High loading 2000kgs/pedestal
- UV-stable and chemical resistant
- Do not damage waterproof membranes
- Allow for positive drainage & ventilation
- Absorb sound increase temperature insulation
- Compensate ground slope
- Easy and fast installation



MOONBAY ADJUSTABLE PEDESTAL PAVER & DECKING SUPPORT

Joist cradle

Support for any kind of substructure:

- timber batten (joists)
- composite battens
- aluminium or steel support sections

Width of the support: up to 63 mm. Fixing holes on both sides of support for mechanical fixing.

Spacer tabs

The head can be fitted with spacer tabs, to give the desired opening between tiles (for water drainage and ventilation).

Head

The head of the support is screwed directly on to the base, or on to the extender. Diameter of 150 mm, can be fitted with various components to support differing surfaces.

Fix collar

Fix and lock the screws after adjustment, ensure pedestals are secured at desired heights and are easily removed when not required.

Base

The base can be simply positioned or fixed to any substrate



Shim

For use with marble, stone slabs, granite pavers, etc. for:

- added anti-slip performance
- shock and sound absorption
- compensation for stone thickness variation

Slope corrector

Compensate slope from 0%-5%
Assembled on top of pedestals
Can be choose to use it or not for different installation condition

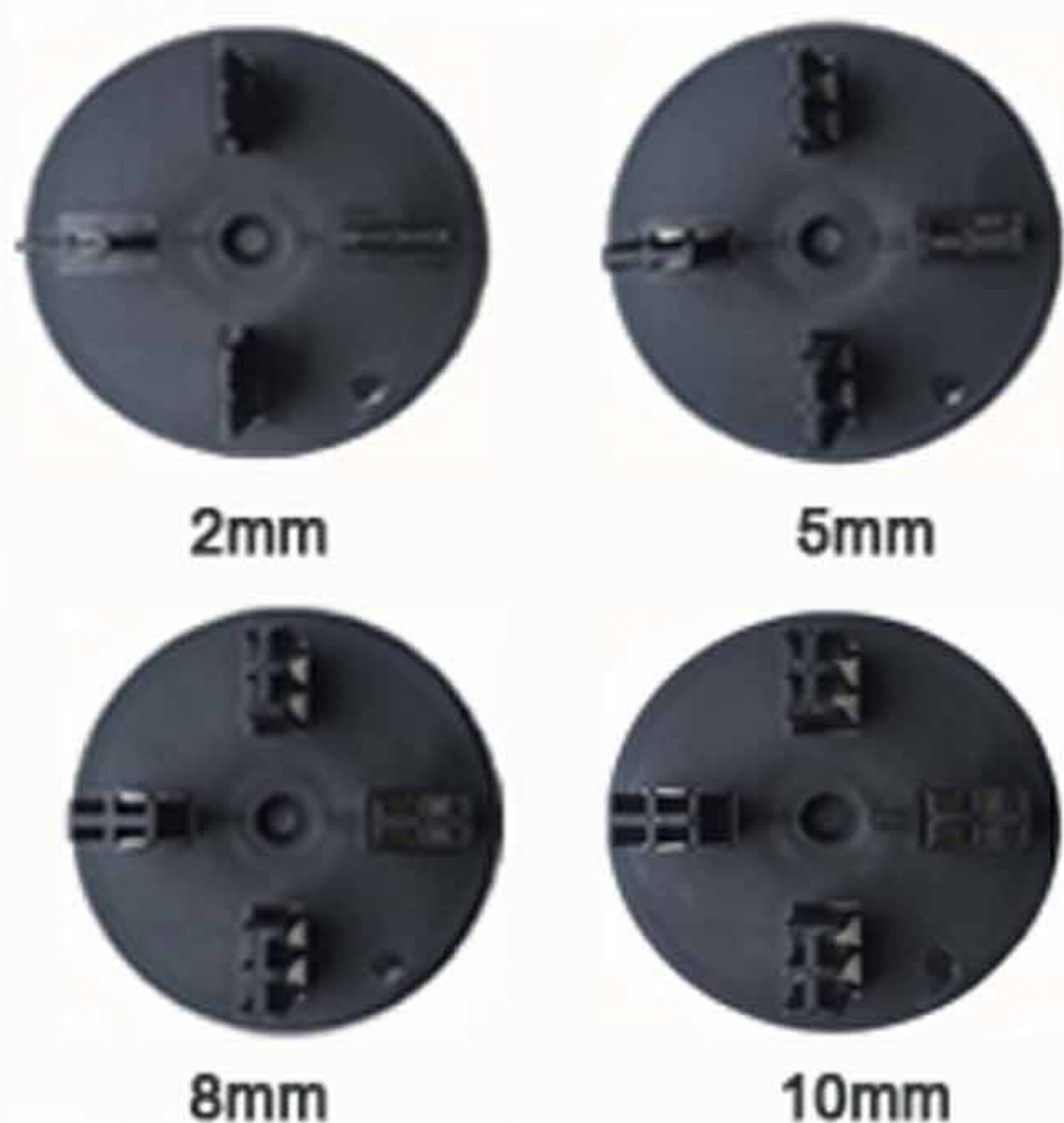
Extender

Extend and add height of adjustable pedestal
Diameter 120mm

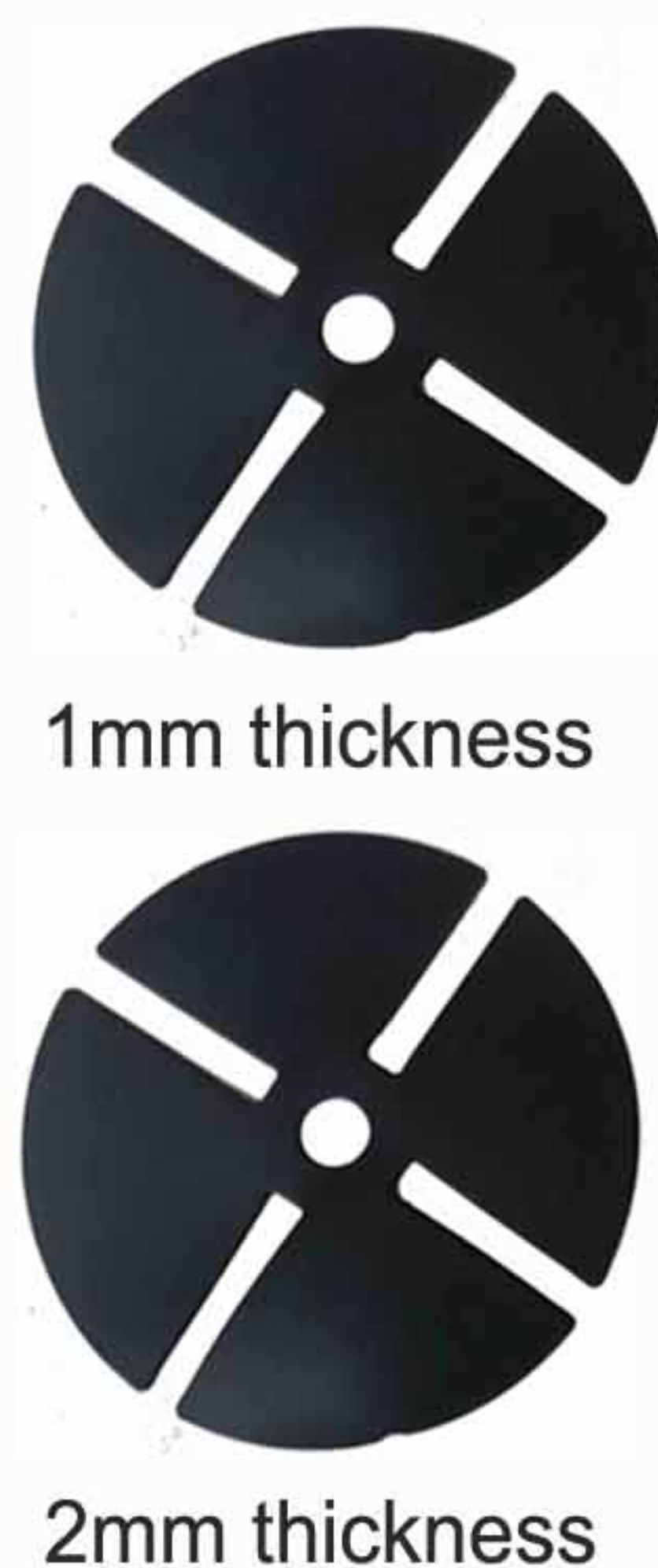
Adjustment ring

Diameter 115 mm
Screw pitch reversed
Adjust height of pedestals

Spacer tabs



Shim



Joist cradle

