



SYSTEMARDEX
PREMIUM PERFORMANCE

DRAINAGE MOISTURE CONTROL SYSTEM

ARDEX UD 150

ARDEX GROUP



For more than 70 years, ARDEX has been the quality leader for an entire industry, offering excellent building chemicals with supreme processing reliability – the brand of choice for installers and wholesalers.

Strong internal growth and intelligent acquisitions in foreign markets today puts the ARDEX Group on the map with 53 subsidiaries and 3000 employees in over 100 countries on all continents, with one unique theme around the world; ARDEX ensures our valued customers receive the same high quality products and services.

ARDEX Australia is part of the ARDEX Group, a company founded in Germany in 1949, that has grown to become a global business, providing engineered solutions for tiling, flooring, waterproofing and concrete repair.

From sub-floor to roofing, we have developed products that stand the test of time – and moisture. Non-failure in these areas, even under extreme conditions, is critical which is why so many professionals rely on ARDEX.

Innovation has been a key influencer to this continued success, with technologies introduced many years ago still unique in their respective industries today. Being part of the Global ARDEX Group, ARDEX Australia has access to a huge research and development resource which is continually developing world unique products and technologies.

SYSTEM ARDEX

ARDEX is committed to developing products that are easy to use and offer high performance. ARDEX products, systems and services are designed to ensure professional contractors get the competitive advantage of a lower total cost of installation through superior performance.

ARDEX tiling and waterproofing products are designed to work together for total reliability and performance. Each product is the careful result of research and development combining the input of contractors, specifiers and installers to ensure absolute product compatibility.

A system of high quality, totally compatible products matched to unparalleled technical and field support.

We call this SystemARDEX.

SUSTAINABILITY



Source raw materials, packaging and products responsibly and work with our suppliers to deliver materials within our sustainability platform objectives.



Consider the life-cycle of products from innovation to disposal, and apply product declarations to support their use in the marketplace.



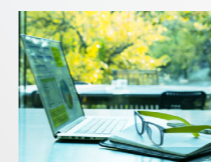
Promote the use of our products in repair and restoration to prevent the generation of waste from substrate/core structure replacement.



Use energy efficiently throughout our business processes. Measure and commit to reducing energy consumption and source its supply in line with the sustainability vision.



Eliminate waste and reuse, recycle or recover energy from waste that cannot be otherwise prevented. Waste will only be land-filled as a last resort.



Develop sustainable workplace environments, foster employee awareness to act in accordance to these values and promote social responsibility.





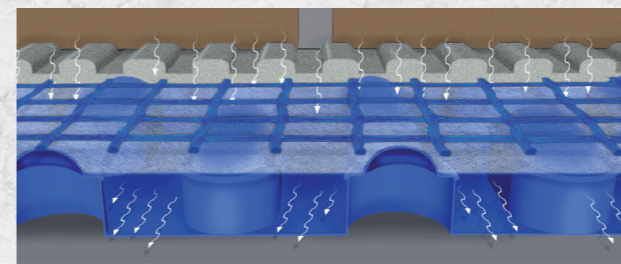
DRAINAGE MOISTURE CONTROL SYSTEM

ARDEX UD 150 is a mesh-reinforced plastic drainage mat for use under directly adhered tiled and stone surfaces.

Used for both internal and external applications, the ARDEX UD 150 is designed with a 6mm drainage channel that allows the free movement of water underneath the tiled surface. Water can move down through the cement-based grouting and tile adhesive products into the drainage channel below where it can travel away with little effort. As the water is neither standing nor passing back up through the tile adhesive and grout, the likelihood of salts being carried up through the tiled surface creating efflorescence is drastically reduced.

- Excellent drainage capabilities
- Greatly reduces the risk of efflorescence
- High compressive strength and durability
- Provides excellent impact sound reduction
- Allows faster drying of the tile and stone adhesives
- Fully compatible with ARDEX waterproofing and tiling systems
- Isolates cracking and substrate movement from the tiled surface

SYSTEM BENEFITS



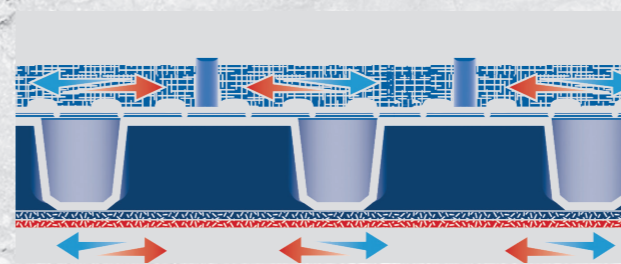
EFFECTIVE VENTILATION

The 6mm air cavity of ARDEX UD 150 provides 3 times faster drying of the tile adhesive compared to bonding directly to the waterproofing membrane.



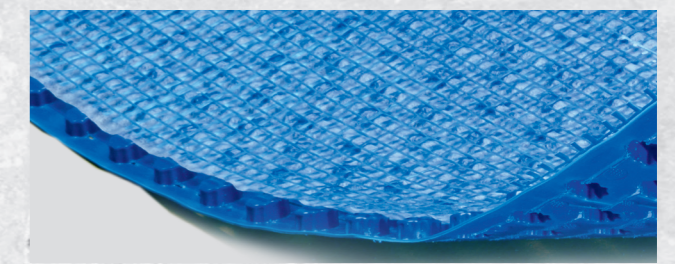
REGULAR DOOR CONNECTIONS

The use of a drain grate in the door area makes it possible to reduce the termination height of the waterproofing. The interior is effectively protected against moisture damage.



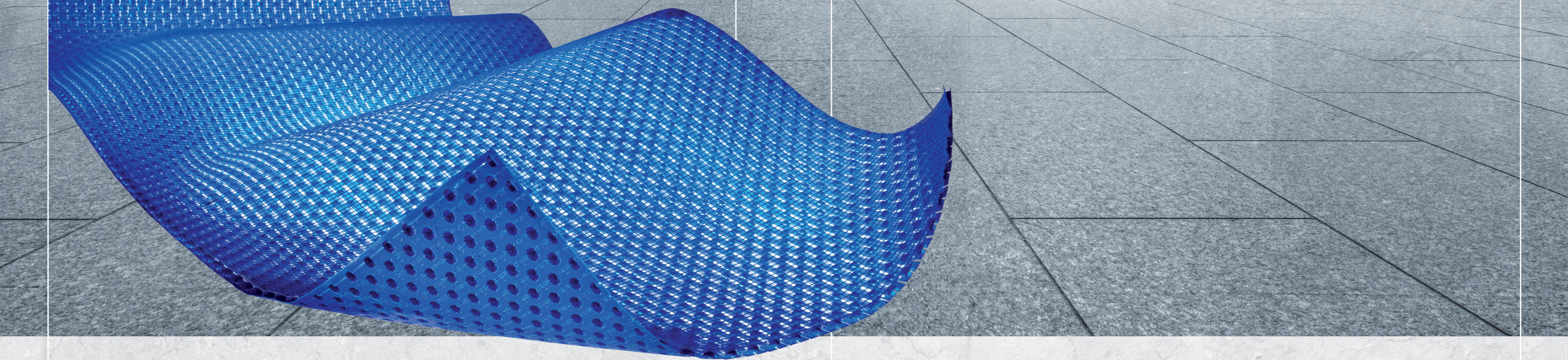
100% DECOUPLING

ARDEX UD 150 is an unbonded system, as a result, the covering is completely separated from the substrate meaning damage caused by shear stresses can be prevented.



SPECIAL FLEECE-MESH COMBINATION

The special fleece avoids calcification of the fleece pores. The alkali-resistant fiberglass reinforcement provides optimum stiffness and bond strength.

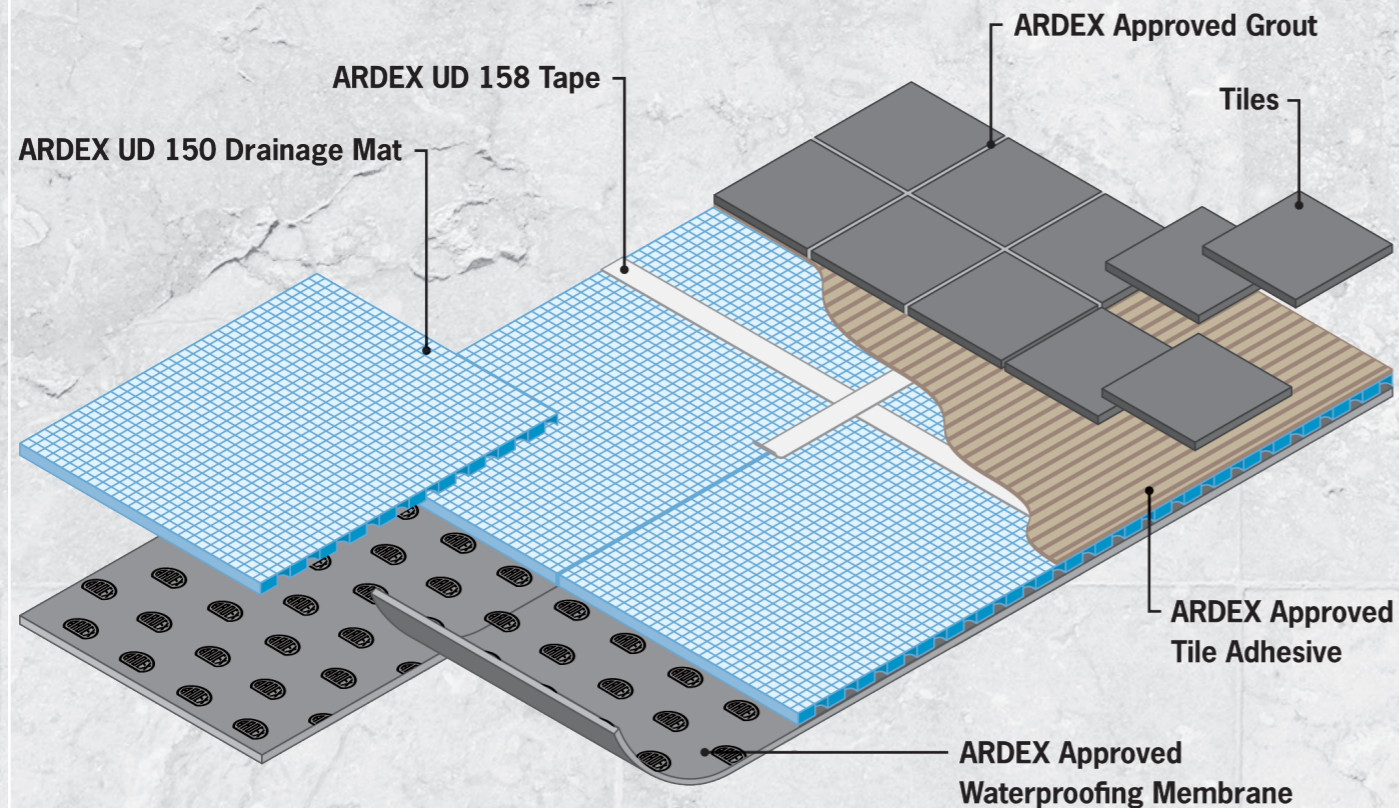



COMPLETE COMPATIBLE SOLUTION

ARDEX UD 150 is suitable to be used over fully waterproofed substrates and must only be installed over ARDEX Waterproofing Membranes. ARDEX offer an extensive range of suitable waterproofing membranes, tile adhesives, and grouts to ensure the complete system remains your complete solution. Visit ardexaustralia.com for more information.

TECHNICAL INFORMATION

- | | |
|--------------------------------|--|
| • Compressive strength | 30MPa |
| • Concentrated point load | < 2.4kN |
| • Drainage capacity (i = 1.5%) | 0.19 - 0.28 l/m/s |
| • Impact sound reduction | 10mm tiles: L'w = 17dB
20mm natural stone: L'w = 19dB |
| • Temperature resistance | -30°C to 70°C (80°C intermittent) |
| • Size | 1.02m x 1.96m (2m ²) |
| • Thickness (Total) | 9mm |
| • Thickness (Drainage core) | 6mm |





ARDEX AUSTRALIA PTY LTD

2 Buda Way,

Kemps Creek NSW 2178

1300 788 780

technicalservices@ardexaustralia.com

www.ardexaustralia.com

TOLL FREE TECHNICAL SERVICES

1800 224 070