



ARDEX UD 150

Drainage Moisture Control System (GUTJHAR WatecDrain KP+)

Greatly reduces the risk of efflorescence

Fully compatible with ARDEX Tile Adhesives

Unbonded drainage mat for use under tiled systems

High compressive strength and impact sound reduction

Isolates cracking and substrate movement from the tiled surface

ARDEX Australia Pty Ltd
2 Buda Way,
Kemps Creek, NSW 2178
Phone: 1300 788 780
Email: technicalservices@ardexaustralia.com
www.ardexaustralia.com

ARDEX New Zealand Ltd
15 Alfred Street, Onehunga Auckland,
New Zealand 1061
Phone: 0800 227 339
Email: info@ardexnz.com
www.ardex.co.nz

ARDEX UD 150

Drainage Moisture Control System

PRODUCT DESCRIPTION

ARDEX UD 150 is a 3-in-1 system providing drainage, drying, and decoupling performance. ARDEX UD 150 greatly reduces the potential of efflorescence, increases tile adhesive drying time, and can be removed without compromising the waterproofing membrane.

FEATURES

- High compressive strength
- Up to 19dB impact sound reduction
- Can eliminate the cause of efflorescence
- Isolates cracking and substrate movement from the tiled surface

USES

ARDEX UD 150 is ideal as a drainage and decoupling layer under directly adhered tiling systems in environments such as bathrooms, balconies, decks, and terraces.

SUBSTRATES

ARDEX UD 150 is suitable to be used over fully waterproofed substrates including concrete, screeds, and compressed fibre cement. ARDEX UD 150 must only be installed over ARDEX Waterproofing Membranes such as:

- ARDEX WPM 002
- ARDEX WPM 909
- ARDEX WPM 157
- ARDEX WPM 8' Series
- ARDEX WPM 155 Rapid Plus
- ARDEX Weldtec™ Membranes
- ARDEX WPM 130 Builders Express

Ensure that all sheet substrates have a deflection no greater than 0.5mm. Substrate fall in accordance with AS3740 or AS4654.

SUBSTRATE PREPARATION

All ARDEX waterproofing membrane products must be installed in accordance to their respective product data sheets. Ensure all ARDEX liquid applied waterproofing membranes are fully cured prior to installation of ARDEX UD 150. Any damages or sources of damage must be repaired or removed. Ensure that the underlying ARDEX waterproofing membrane is free of dust, dirt, debris, or other materials which may damage the ARDEX Waterproofing Membrane and or ARDEX UD 150.

MOVEMENT JOINTS

All existing expansion joints, isolation joints, and construction joints must be honoured up through the ARDEX UD 150 and tile or stone. Please note that the coverings must not be constrained/ wedged in a force-fitting manner at any point,

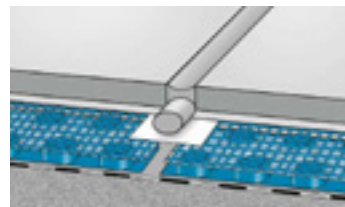
since otherwise thermally induced compressions can occur. An expansion joint through the entire covering thickness, including ARDEX UD 150 must be formed.

Floor movement joints

After the ARDEX waterproofing membrane has been applied and the floor movement joints detailed accordingly, cut the ARDEX UD 150 mat where necessary and provide a 5mm minimum gap between sheets (excluding construction joints).

Centrally install duct tape along the joint. The arrangement of the movement joints in the tile or stone installation must be aligned with the divisions of the ARDEX UD 150 mat. The use of duct tape / masking tape is to prevent entry of tile adhesive or grout into the joint.

Before caulk filling the tile joint with ARDEX Silicone, a backing rod can be installed, see below picture.



The exact joint width of a construction joint must be honoured through the ARDEX UD 150 mat and finished tiled surface.

PERIMETER UPTURN DETAIL

To allow for potential differential movement between the substrate and ARDEX UD 150, an 8mm (minimum) gap between all upturns and ARDEX UD 150 must be achieved throughout the installation.

PERIMETER BALCONY EDGE DETAIL

ARDEX suggests to install the DTA Balcony Edge Trim With Weep Holes prior to ARDEX UD 150 being installed. The balcony trim has been designed to ensure water freely drains from the area as the weep holes are located every 300mm and the lip design reduces water dripping onto the facade. Contact DTA Australia on 1800 505 045 or sales@dta.com.au

For ARDEX Liquid Applied Membranes ensure the membrane is clean, sound, and has fully cured before installing the DTA Balcony Edge Trim With Weep Holes. Please refer to the ARDEX membranes respective product data sheet regarding product curing times. Install the DTA Balcony Edge Trim With Weep Holes by applying ARDEX RA 050 or ARDEX CA 20 P PLUS Sealant to the top of the cured ARDEX membrane and the underside of the horizontal trim, then firmly press onto the ARDEX membrane. Ensure sound and uniform contact is made to create strong adhesion. The DTA Balcony Edge Trim will require solvent wipe (allow to flash off) prior to application of ARDEX RA 050 or ARDEX CA 20 P PLUS to remove extruding oils.

ARDEX UD 150

Drainage Moisture Control System

For ARDEX Weldtec™ Membranes the fleece must be removed before installing the DTA Balcony Edge Trim With Weep Holes. Carefully remove the fleece on the ARDEX Weldtec membrane using approved heat-welding equipment and ensure all loose fleece is removed from the area. Install the DTA Balcony Edge Trim With Weep Holes by applying ARDEX RA 050 or ARDEX CA 20 P PLUS Sealant to the top of the ARDEX membrane and the underside of the horizontal trim, then firmly press onto the ARDEX membrane. Ensure sound and uniform contact is made to create strong adhesion. The DTA Balcony Edge Trim will require solvent wipe (allow to flash off) prior to application of ARDEX RA 050 or ARDEX CA 20 P PLUS to remove extruding oils.

SUITABLE TILE TYPES

ARDEX UD150 is suitable to receive many tile types including fully vitrified and ceramic tiles, porcelain, and natural stone (excluding moisture sensitive).

Tiles must be a minimum of 100mm x 200mm and a maximum of 600mm x 600mm in size. Minimum thickness for vitrified porcelain tiles is 8mm, glazed ceramic tiles (monocottura) 10mm, and natural stone 20mm to cover the differences in flexural strength. Tiles must be frost resistant.

TILE ADHESIVE APPLICATION

Apply the ARDEX Tile Adhesive to the ARDEX UD 150 with the flat side of a notched trowel (keying in technique) to fill in the space between fleece and reinforcement. Comb additional tile adhesive "wet on wet" with the appropriate notched trowel for the size of the tile or stone to be installed, and directly lay the tile or stone on top.

Ensure tile back-buttering and contact coverage as per AS3958. Occasionally remove tiles and check there are no voids in the tile adhesive layer.

The tile adhesive thickness will vary depending on tile adhesive being applied, and must be in accordance with the product data sheet. Avoid foot traffic within the tiled area until the tile adhesive has cured. Suitable ARDEX Tile Adhesives include:

- ARDEX X 18
- ARDEX X 77
- ARDEX X 32

ARDEX offer an extensive range of suitable tile adhesives, for more information please contact ARDEX Technical Services (technicalservices@ardexaustralia.com).

TILE GROUTING APPLICATION

ARDEX offer an extensive range of suitable tile grouts, for more information please contact ARDEX Technical Services (technicalservices@ardexaustralia.com).

For ARDEX cementitious grouts, ARDEX Grout Booster should be used to greatly improve flexibility, adhesion, and abrasion

resistance. Please refer to the ARDEX Grout Booster product data sheet for more information. Grouting can proceed once the tile bed has hardened sufficiently so that tiles will not be dislodged. Allow longer curing times for humid climates and lower temperatures.

TECHNICAL DATA

CHARACTERISTICS	TEST METHOD	NOMINAL VALUE
Length		1.96m
Width		1.02m
Thickness		9mm
Thickness (drainage core)		6mm
Compressive Strength		30MPa
Concentrated point load		<2.4kN
Drainage capacity	DIN EN ISO 12958	1.5% fall = 0.28 L/m/s 10% fall = 0.78 L/m/s
Impact sound reduction	DIN EN ISO 717-2	10mm tile: L'w = ≥ 17dB 20mm natural stone: L'w = ≥ 19dB
Temperature resistance (continuous)		-30°C to 70°C
Temperature resistance (intermittent)		80°C
Static pressure load		3,000kg/m ²

COVERAGE

Sheet size: 1.02m wide x 1.96m long (2m² per sheet).
8 x sheets per carton (total 16m² per carton).

PACKAGING

Sold in carton quantity only.

Weight per sheet: 2kg approx.

Weight per carton: 16kg approx.

ARDEX UD 158 Tape - 100mm wide x 25m long.

STORAGE

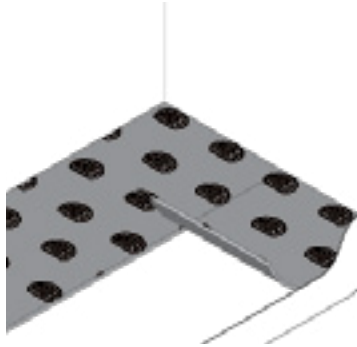
ARDEX UD 150 has an indefinite shelf life when stored in good conditions, between 5°C - 30°C. Rolls must be stored horizontally, out of direct sunlight, away from sources of puncture and physical damage, away from ignition sources and open flame.

ARDEX UD 150

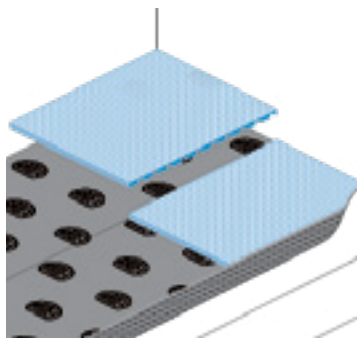
Drainage Moisture Control System

INSTALLATION GUIDE

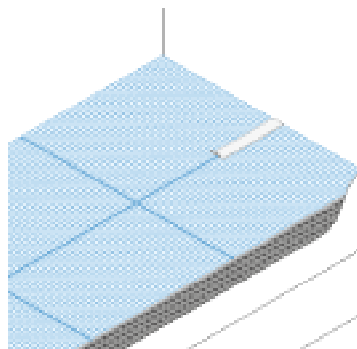
1. Install ARDEX Waterproofing Membrane as per product datasheet.



2. Measure and cut ARDEX UD 150 matting to achieve the correct fit, placing mat with seams butted. Ensure the fibreglass weave is facing upwards.

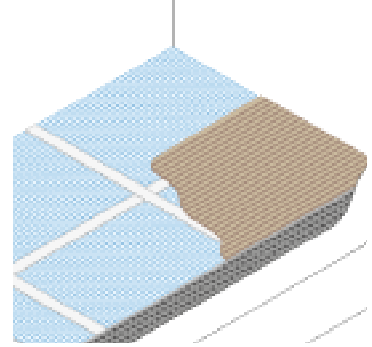


3. Install ARDEX UD 158 Tape to reinforce all butted ARDEX UD 150 joints. Excluding expansion joints, isolation joints, and construction joints.



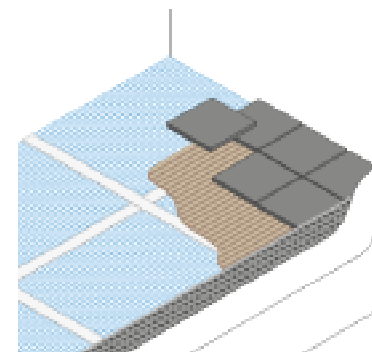
4. For movement joint arrangement and design, refer to Movement Joints section within this document.

5. Commence tiling using an ARDEX Tile Adhesive. With the trowels flat side, skim a coat of tile adhesive into the fibre glass weave ensuring full coverage before trowelling remaining tile adhesive with the correct notch size (wet on wet application).

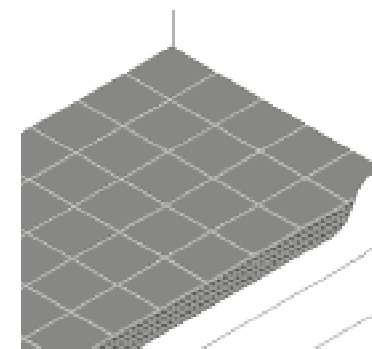


6. Tiling in accordance with AS3958.

Ensure correct coverage of tile adhesive on the back of the tile by back-buttering the tile before laying.



7. Grouting can proceed once the tile bed has hardened sufficiently so that tiles will not be dislodged. Apply ARDEX Grout in accordance with the relevant product data sheet.



ARDEX UD 150

Drainage Moisture Control System

LIMITATIONS

ARDEX UD 150 will obtain a SystemARDEX Warranty when installed in accordance and onto ARDEX Waterproofing Membranes listed in this document only. ARDEX UD 150 is not suitable for surfaces subject to heavy loads (i.e., pallet trucks, impact stress and impact loads, vehicles etc). Do not apply ARDEX engineered screeds/toppings directly to ARDEX UD 150. Do not adhere or mechanically fix ARDEX UD 150 under any circumstance. Do not install onto thermal insulation, soil, sand, earth, or gravel. Tiling must be in accordance with AS3958.

Before any substrate preparation, installation or finishing methods relating to ARDEX product are undertaken, please be aware of any potential risks and use appropriate PPE (personal protective equipment). This may involve contacting substrate manufacturers for Safety Data Sheets.

GUARANTEE

ARDEX Australia Pty Ltd (“we” or “us”) guarantees this product (“our goods”) is free from manufacturing defects and will perform to any applicable specification published by us for 10 years from the date of purchase. Our liability under this guarantee is limited at our option to replacement of the product, repair of any damage to the immediate surface or area of application of the product, or compensation, in each case if we are satisfied loss or damage was due to a breach of this guarantee. This guarantee does not apply if damage or loss is due to failure to follow published instructions or any act or circumstance beyond our control, including shade variations and efflorescence. If you wish to make a claim under this guarantee you must notify us (ARDEX Australia Pty Ltd, 20 Powers Road Seven Hills NSW 2147; Toll Free: 1800 224 070; Email: technicalservices@ardexaustralia.com) and provide evidence of your purchase of the product within 30 days of any alleged loss or damage occurring. We reserve the right to ask you for satisfactory evidence of any alleged loss or damage. Any claim under this guarantee is at your cost. This guarantee is in addition to any rights or remedies you may have as a “consumer” under the Australian Consumer Law and to that extent you need to be aware that: “Our goods come with guarantees that cannot be excluded under the Australian Consumer Law. You are entitled to a replacement or refund for a major failure and for compensation for any other reasonably foreseeable loss of damage. You are also entitled to have the goods repaired or replaced if the goods fail to be of acceptable quality and the failure does not amount to a major failure”.

DISCLAIMER

The technical details, recommendations and other information contained in this data sheet are given in good faith and represent the best of our knowledge and experience at the time of printing. It is your responsibility to ensure that our products are used and handled correctly and in accordance with any applicable Australian Standards. Our instructions and recommendations are only for the uses they are intended. Users are advised to confirm that this product is suitable for their application and conforms with the specifications of the system. We also reserve the right to update information without prior notice to you to reflect our ongoing research and development program. Country specific recommendations, depending on local

standards, codes of practice, building regulations or industry guidelines, may affect specific installation recommendations. The supply of our products and services is also subject to certain terms, warranties and exclusions, which may have already been disclosed to you in prior dealings or are otherwise available to you on request. You should make yourself familiar with them.

© ARDEX Australia Pty Ltd 2022.

All aforementioned products are the trade marks of ARDEX Australia Pty Ltd, its licensors and affiliates.

This data sheet was issued in September 2024 and is valid for 3 years, in some instances a newer version may be published. Always refer to www.ardexaustralia.com for the latest technical data from ARDEX Australia Pty Ltd.